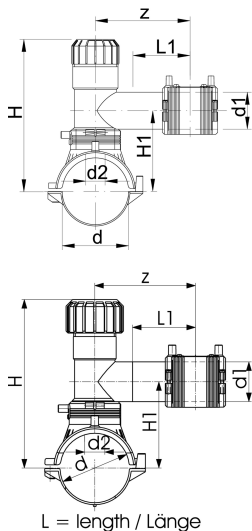




ELGEF Plus Tapping saddle (kit) PE100
d63-315mm / SDR11 / With 360° rotatable outlet

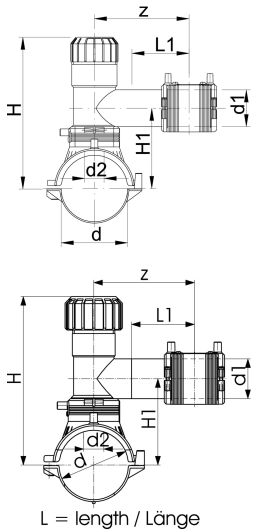
- 10 bar Gas / 16 bar Water
 - With integrated cutter to tap live mains under pressure
 - Complete with lower part
 - 4 mm pin connectors
 - Limited path fusion indicators
 - Long fusion outlet
 - O-ring-sealed screw cap
 - Supplied as Kit with enclosed service line fitting (ELGEF Plus Coupler or Reducer)
 - d355-400mm. Not suitable for pipes if wall thickness is larger than SDR17 pipes.
- * Topload: delivery without lower part for assembling as Top Load with tool no. 799.350.477; angle adaptor (799.350.340) for fusion cable required



d	SDR	PN	DN	d1	Code	Weight
(mm)		(bar)	(mm)	(mm)		(kg)
63	11	16	50	20	193 132 402	0.754
63	11	16	50	25	193 132 403	0.761
63	11	16	50	32	193 132 404	0.773
63	11	16	50	40	193 132 405	0.798
63	11	16	50	50	193 132 436	1.619
63	11	16	50	63	193 132 437	1.623
75	11	16	65	20	193 132 442	0.879
75	11	16	65	25	193 132 443	0.900
75	11	16	65	32	193 132 444	0.917
75	11	16	65	40	193 132 445	0.958
75	11	16	65	50	193 132 446	1.748
75	11	16	65	63	193 132 447	1.753
90	11	16	80	20	193 132 452	0.856
90	11	16	80	25	193 132 453	0.858
90	11	16	80	32	193 132 454	0.857
90	11	16	80	40	193 132 455	0.780
90	11	16	80	50	193 132 456	1.711
90	11	16	80	63	193 132 457	1.707
110	11	16	100	20	193 132 462	0.907
110	11	16	100	25	193 132 463	0.905
110	11	16	100	32	193 132 464	0.875
110	11	16	100	40	193 132 465	0.961
110	11	16	100	50	193 132 466	1.133
110	11	16	100	63	193 132 467	1.330
125	11	16	100	20	193 132 472	0.938
125	11	16	100	25	193 132 473	0.943
125	11	16	100	32	193 132 474	0.955
125	11	16	100	40	193 132 475	0.964
125	11	16	100	50	193 132 476	1.374
125	11	16	100	63	193 132 477	1.161
140	11	16	125	20	193 132 482	0.941
140	11	16	125	25	193 132 483	0.944
140	11	16	125	32	193 132 484	0.972
140	11	16	125	40	193 132 485	1.020
140	11	16	125	50	193 132 486	1.835
140	11	16	125	63	193 132 487	1.833
160	11	16	150	20	193 132 492	0.910
160	11	16	150	25	193 132 493	0.933
160	11	16	150	32	193 132 494	0.954
160	11	16	150	40	193 132 495	0.965
160	11	16	150	50	193 132 496	1.375
160	11	16	150	63	193 132 497	1.378
180	11	16	150	20	193 132 502	1.020
180	11	16	150	25	193 132 503	1.057
180	11	16	150	32	193 132 504	1.045
180	11	16	150	40	193 132 505	1.122

Data sheet

valid from: 9/29/21

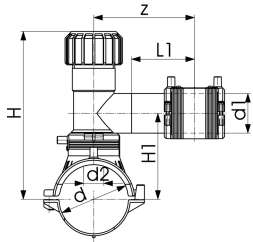
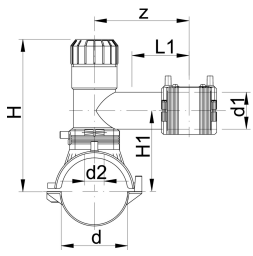


d (mm)	SDR	PN (bar)	DN (mm)	d1 (mm)	Code	Weight (kg)	
180	11	16	150	50	193 132 506	1.938	
180	11	16	150	63	193 132 507	1.918	
200	11	16	200	20	193 132 512	1.065	
200	11	16	200	25	193 132 513	1.065	
200	11	16	200	32	193 132 514	1.095	
200	11	16	200	40	193 132 515	1.131	
200	11	16	200	50	193 132 516	1.957	
200	11	16	200	63	193 132 517	1.900	
225	11	16	200	20	193 132 522	1.460	
225	11	16	200	25	193 132 523	0.991	
225	11	16	200	32	193 132 524	1.095	
225	11	16	200	40	193 132 525	1.134	
225	11	16	200	50	193 132 526	1.921	
225	11	16	200	63	193 132 527	1.951	
250	11	16	250	20	193 132 532	1.079	
250	11	16	250	25	193 132 533	1.095	
250	11	16	250	32	193 132 534	1.092	
250	11	16	250	40	193 132 535	1.113	
250	11	16	250	50	193 132 536	1.971	
250	11	16	250	63	193 132 537	1.923	
*	280	11	16	250	32	193 132 544	1.455
*	280	11	16	250	40	193 132 545	1.500
*	280	11	16	250	50	193 132 546	1.500
*	280	11	16	250	63	193 132 547	1.510
*	315	11	16	300 - 350	32	193 132 554	1.648
*	315	11	16	300 - 350	40	193 132 555	1.015
*	315	11	16	300 - 350	50	193 132 556	1.440
*	315	11	16	300 - 350	63	193 132 557	1.602

d (mm)	d2 (mm)	H (mm)	H1 (mm)	L (mm)	L1 (mm)	z (mm)	SDR pipe
63	32	186	108	165	76	130	9 - 11
63	32	186	108	165	76	130	9 - 11
63	32	186	108	165	76	130	9 - 11
63	32	186	108	165	76	130	9 - 11
63	32	234	112	165	100	160	9 - 11
63	32	234	112	165	100	160	9 - 11
75	32	191	113	165	76	130	9 - 11
75	32	191	113	165	76	130	9 - 11
75	32	191	113	165	76	130	9 - 11
75	32	240	118	165	76	160	9 - 11
75	32	240	118	165	100	160	9 - 11
75	32	240	118	165	100	160	9 - 11
90	32	199	121	165	76	130	9 - 11
90	32	199	121	165	76	130	9 - 11
90	32	199	121	165	76	130	9 - 11
90	32	199	126	165	76	130	9 - 11
90	32	248	126	165	100	160	9 - 11
90	32	248	126	165	100	160	9 - 11
110	32	209	131	165	76	130	9 - 17.6
110	32	209	131	165	76	130	9 - 17.6
110	32	209	131	165	76	130	9 - 17.6
110	32	209	136	165	76	130	9 - 17.6
110	35	258	136	165	100	160	9 - 17.6
110	35	258	136	165	100	160	9 - 17.6
125	32	216	138	165	76	130	9 - 17.6
125	32	216	138	165	76	130	9 - 17.6
125	32	216	138	165	76	130	9 - 17.6
125	32	216	143	165	76	130	9 - 17.6

Data sheet

valid from: 9/29/21



L = length / Länge

	d	d2	H	H1	L	L1	z	SDR pipe
	(mm)	(mm)	(mm)	(mm)	(mm)	(mm)	(mm)	
	125	35	256	143	165	100	160	9 - 17.6
	125	35	256	143	165	100	160	9 - 17.6
	140	32	234	146	165	76	130	9 - 17.6
	140	32	234	146	165	76	130	9 - 17.6
	140	32	234	146	165	76	130	9 - 17.6
	140	32	234	146	165	76	130	9 - 17.6
	140	35	283	151	165	100	160	9 - 17.6
	140	35	283	151	165	100	160	9 - 17.6
	160	32	234	156	165	76	130	9 - 17.6
	160	32	234	156	165	76	130	9 - 17.6
	160	32	234	156	165	76	130	9 - 17.6
	160	32	234	161	165	76	130	9 - 17.6
	160	35	283	161	165	100	160	9 - 17.6
	160	35	283	161	165	100	160	9 - 17.6
	180	32	244	166	165	71	130	9 - 26
	180	32	244	166	165	71	130	9 - 26
	180	32	244	166	165	76	130	9 - 26
	180	32	244	171	165	76	130	9 - 26
	180	35	293	171	165	100	160	9 - 26
	180	35	293	171	165	100	160	9 - 26
	200	32	254	176	165	76	130	9 - 26
	200	32	254	176	165	71	130	9 - 26
	200	32	254	176	165	76	130	9 - 26
	200	32	254	181	165	76	130	9 - 26
	200	35	303	181	165	100	160	9 - 26
	200	35	303	181	165	100	160	9 - 26
	225	32	266	188	165	71	130	11 - 26
	225	32	266	188	165	71	130	11 - 26
	225	32	266	188	165	76	130	11 - 26
	225	32	266	193	165	76	130	11 - 26
	225	35	315	193	165	100	160	11 - 26
	225	35	315	193	165	100	160	11 - 26
	250	32	279	201	165	76	130	11 - 26
	250	32	279	201	165	76	130	11 - 26
	250	32	279	201	165	76	130	11 - 26
	250	32	279	206	165	76	160	11 - 26
	250	35	328	206	165	100	160	11 - 26
	250	35	328	206	165	100	160	11 - 26
*	280	35	343	206	165	100	160	11 - 26
*	280	35	343	206	165	100	160	11 - 26
*	280	35	343	206	165	100	160	11 - 26
*	280	35	343	206	165	100	160	11 - 26
*	315	35	381	206	165	100	160	17 - 33
*	315	35	381	206	165	100	160	17 - 33
*	315	35	381	206	165	100	160	17 - 33
*	315	35	381	206	165	100	160	17 - 33

The technical data are not binding. They neither constitute expressly warranted characteristics nor guaranteed properties nor a guaranteed durability. They are subject to modification. Our General Terms of Sale apply.

Georg Fischer Piping Systems Ltd, Postfach, CH-8201 Schaffhausen/Switzerland
 Phone +41 -(0)52-631 1111
 e-mail: info.ps@georgfischer.com

Data sheet

valid from: 9/29/21



Internet: <http://www.gfps.com>